

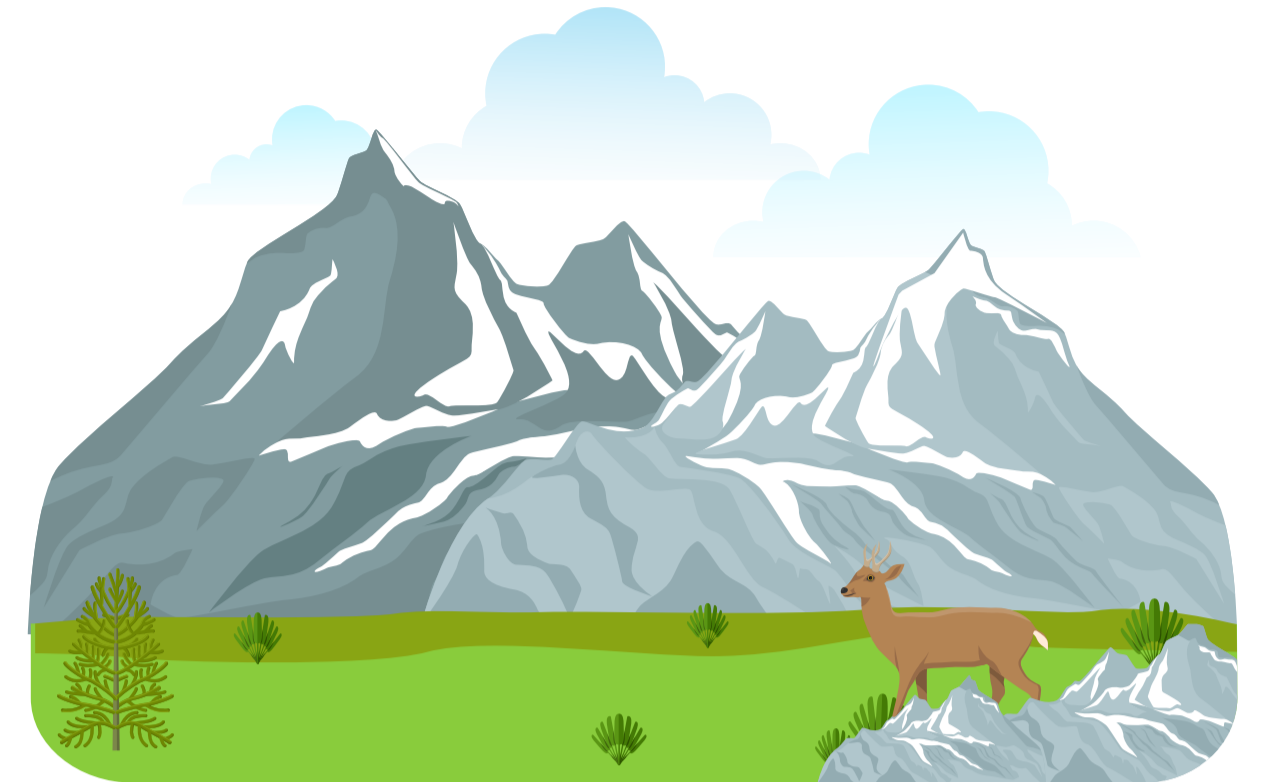
CHILE



Situated perfectly between the Andes Mountains and the Pacific Ocean, Chile's chic cities, natural beauty, and warm, welcoming people make this an ever-enticing destination to explore with Central Holidays. Its obvious European influence is apparent throughout the country, its people, their culture and cuisine, as well as in their ancestor's history. Take your time on our Chile travel packages as you explore Santiago de Chile and try a pisco sour, have an exquisite meal at a top-flight restaurant, or enjoy the blissful background of the majestic Andes from one of the city's rooftop bars. In Chile, you will also find abundant forests, fantastic glaciers, and fjords. Travel to Chile and explore the end of the world, and then go even further to Patagonia! The southernmost tip of the South American continent, this is one of the most remote spots on earth – wild and rugged with breathtaking landscapes.

Weather

It is warm all year round. The best seasons are spring, September-November and fall, March-May.



Andes Mountains

The Andes Mountains are the longest continental mountain range in the world, enjoy the blissful background of the majestic Andes from one of the city's rooftop bars.



Easter Island

located halfway between Chile and Tahiti, it boasts the earth's most enigmatic archaeological mysteries. Here you will delve into the mysterious ancient culture of the island and see firsthand the monolithic Moai statues carved from volcanic rock.



The glaciers

In Chile, you will also find abundant forests, fantastic glaciers, and fjords. The glaciers of Chile cover 2.7% of the land area of the country.



Cueca

The national dance of Chile is called the Cueca. This dance has rich historical roots, The Cueca is a parody of the courtship of a chicken and rooster. The dancers wave handkerchiefs above their heads during the dance.



Santiago

Chile's capital and largest city, housing the National History Museum, and the 18th-century Metropolitan Cathedral. La Chascona is the home-turned-museum of poet Pablo Neruda.



Patagonia

Go to Patagonia and explore the end of the world, The southernmost tip of the South American continent, this is one of the most remote spots on earth – wild and rugged with breathtaking landscapes.

Chilean cuisine

Chilean gastronomy stems mainly from the combination of traditional Spanish cuisine, Chilean Indigenous Mapuche culture, Empanadas: pastry filled with meat or cheese. Cazuela: homemade stew with beef, chicken and corn.



Official languages
Spanish



Currency
Peso (CLP)



Area
(291,930.4 sq mi)