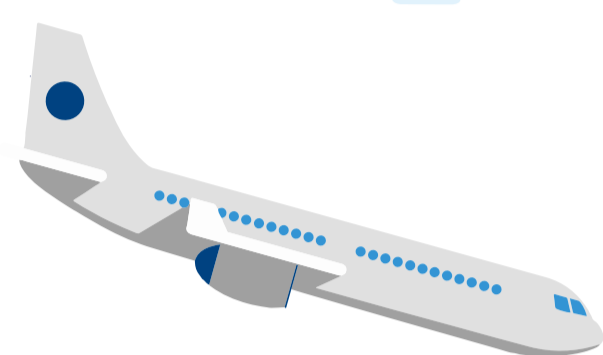


ANTIQUITY TO BYZANTIUM CRUISE



1

ATHENS | PALAIA EPIDAUROS



Embarkation at Marina Zea in Athens between 2:00 and 3:00pm. Enjoy a welcome drink and meet your crew and fellow passengers. Sail for Palaia Epidauros. Evening arrival and dinner on board.



PALAIA EPIDAUROS | NAFPLION

2

Leave the ship early in the morning to drive to Ancient Epidauros for an optional excursion. Epidauros was known throughout the Greek world as a healing sanctuary. It was reputed to be the birthplace of Apollo's son Asclepius - and for its theater, which is once again in use today. The sanctuary was looted by the Roman general Sulla by pirates and later by Goths in 395 A.D. and very little remains of it today.



3

NAFPLION | MONEMVASIA



After a short walking tour of Nafplion, drive through the colorful city and the beautiful countryside of Argolis towards Mycenae for an optional excursion. The importance of the city, which Homer called "rich in gold", began in 1650 B.C and ceased around 1100 B.C with the fall of the civilization to which it gives name.



GYTHION

4

Early morning arrival to Gythion. Optional excursion to Mani peninsula and Cape Tenaro plus the spectacular Dirou Caves with their stalactites and stalagmites. Ancient Gythion was inhabited during prehistoric times and later the Spartans used it as a port.



5

PYLOS

Pylos is a picture-perfect seaside town on the southwest corner of the Peloponnese. In 1827, a fleet of Venetians and other city states defeated an Ottoman fleet in one of the most important naval battles in history. This defeat led to the independence of Greece, which occurred in 1829. During an optional excursion and after stopping to admire the scenery, continue up the road to Nestor's Palace.



KATAKOLON | ITEA

6

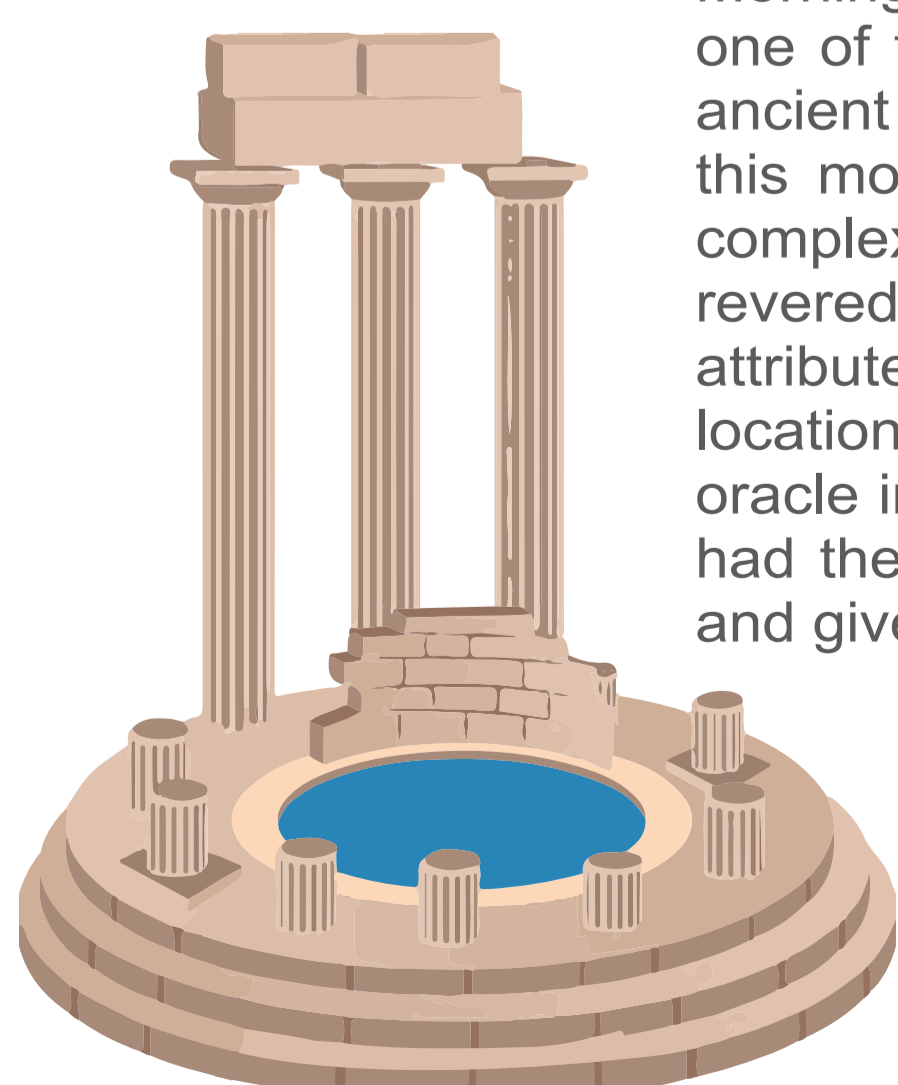
Early morning arrival in Katakolon. Disembark the ship around 7:00am in the port town of Katakolon. Take an optional excursion by bus to Olympia, one of the most famous and important sites in the ancient world. Revered as the birthplace of the Olympic Games, it was also the greatest Pan-Hellenic sanctuary for the worship of Zeus. Olympia persisted well into Roman times until its demise in the 3rd century A.D. when fires, earthquakes and invading tribes from the north left the ancient site in ruins.



7

ITEA | ATHENS

Morning optional excursion to Delphi, one of the most revered sites from the ancient world. Disembark the ship early this morning and proceed to the ruins complex. In its prime, Delphi was revered for its wealth and reputation, attributes which grew from the site's location as hosting the most important oracle in the classical world. The oracle had the ability to prophesize the future and give advice.



ATHENS

8

Disembarkation after breakfast.

