

PANAMA

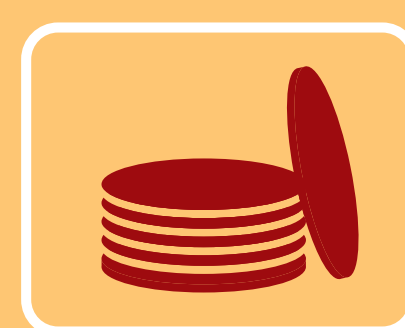
We are thrilled to take you to experience all that Panama has to offer, from its namesake canal, endless azure seas and beaches, to its bustling cities...from its aromatic coffee plantations, to its naturally profound cloud forests of Chiriquí, come enjoy magical moments in Panama that are all your own. Travel to Panama and delve into the country's diverse areas – Panama City, San Blas Islands, plus beach and rainforest areas. Embark on a once-in-a-lifetime Panama vacation package to traverse the Panama Canal. Explore bustling Panama City from its colonial old center to its modern restaurants and cafés.



Population
4,034,119



Area
29,119 sq mi



Currency
75,417 km2

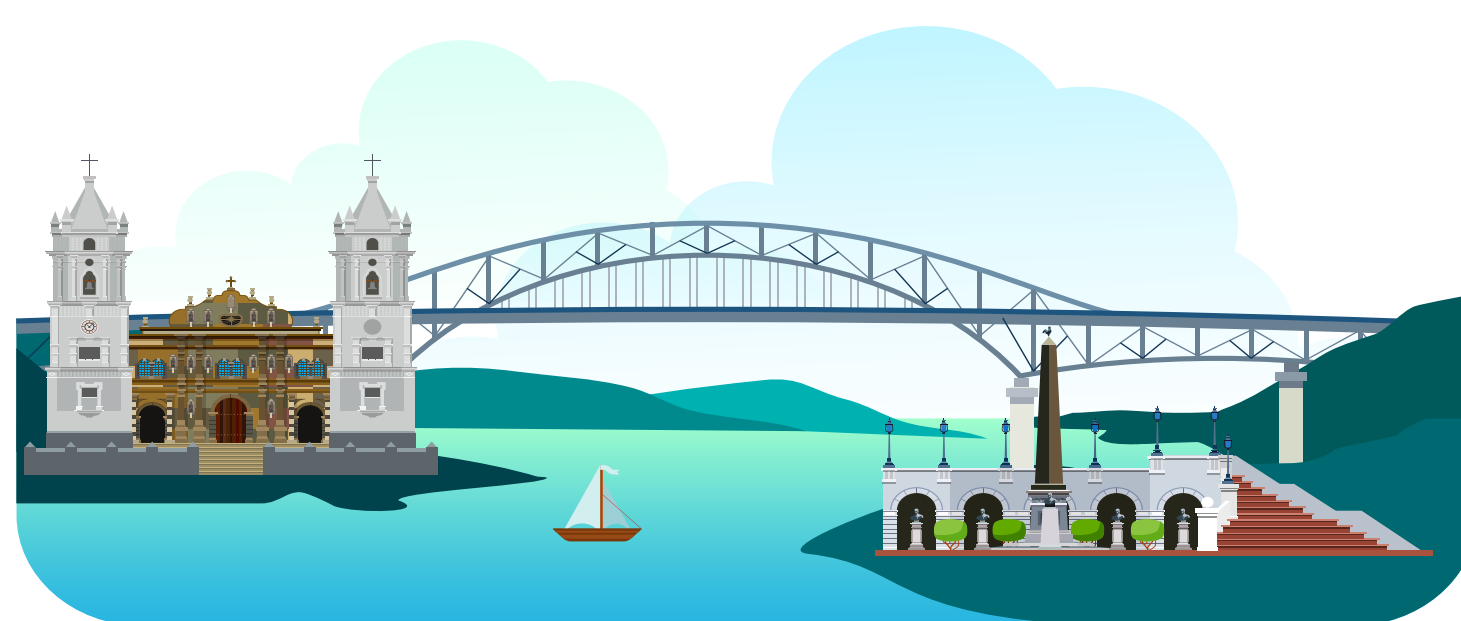


Official Language
Spanish



Las Bovedas Panama

This trellised promenade is one of the most beautiful parts of Casco Viejo. Its vine- and bougainvillea-covered esplanade runs along the top of the sea wall built by the Spanish to protect the city.



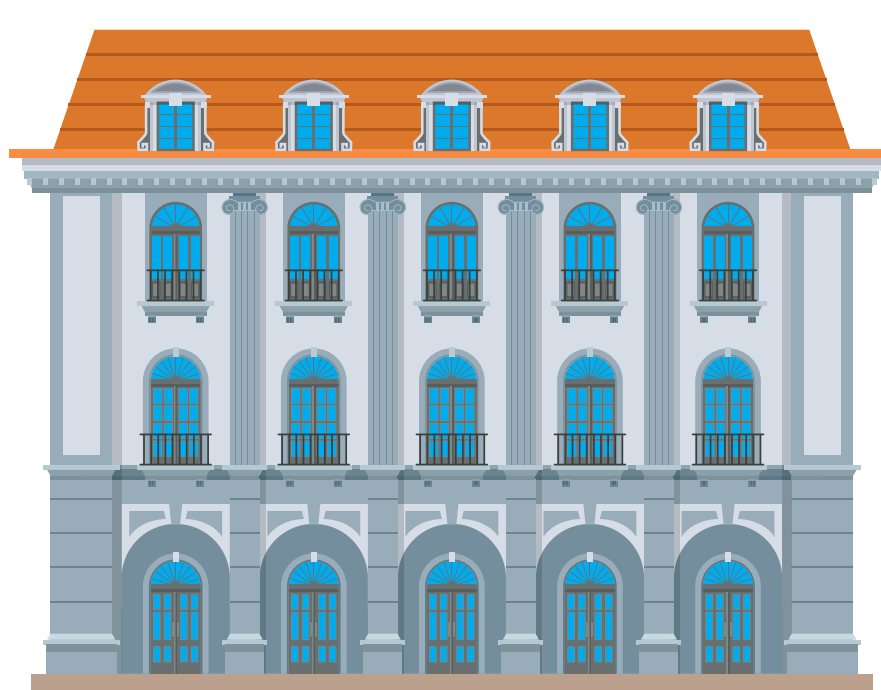
The Panama Canal

Is an artificial 82 km waterway in Panama that connects the Atlantic Ocean with the Pacific Ocean. The canal cuts across the Isthmus of Panama and is a conduit for maritime trade.



Capital

Panama City, the capital of Panama, is a modern city framed by the Pacific Ocean.



The Panama Canal Museum

Is a non-profit and public museum, the museum is devoted to the history of the construction of the Panama Canal in its various stages, it is located in the city's old quarter.



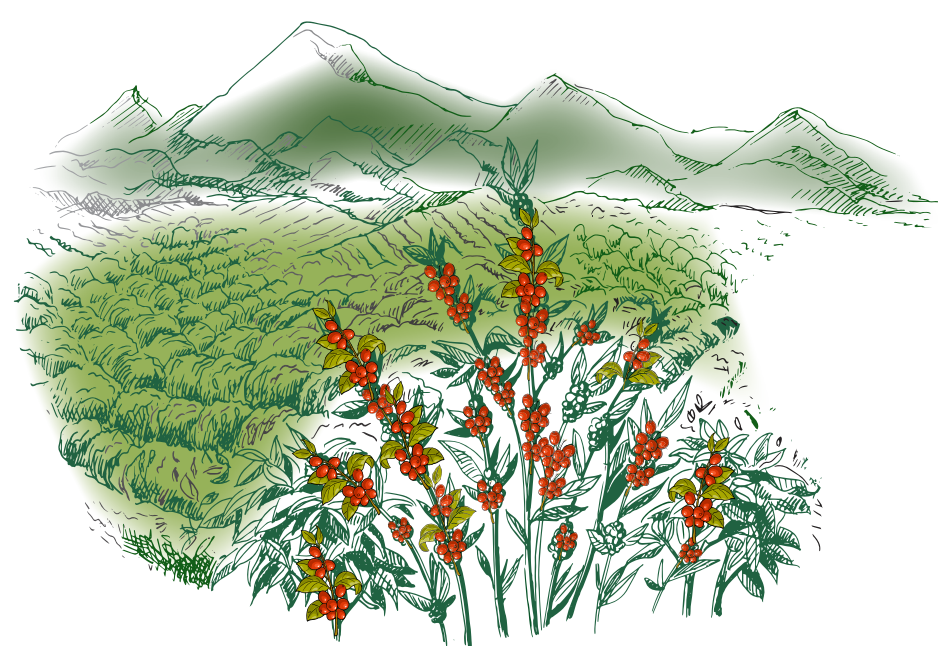
The Palacio de las Garzas

Is a non-profit and public museum, the museum is devoted to the history of the construction of the Panama Canal in its various stages, it is located in the city's old quarter.



The Sacred Heart Cathedral

Is a Catholic church located in the old town and it is the episcopal see of the Archdiocese of Panama. The Metropolitan Cathedral of Panama is heir to the Cathedral erected by Pope Adrian VI in the great house of the Cacique Cémaco.



Panama Coffee

Panama is famous for its Geisha coffee, which is the most expensive in the world. It is arguably magic, indeed. Made from hand-picked coffee cherries that were harvested in the tallest mountain in Panama, Volcán Barú.



Food

Chicken soup (sancocho) this is a hearty chicken and vegetable soup and is one of the most typical dishes in Panama.



Weather

Panama has a tropical maritime climate with a hot, humid, rainy season (May to December) and a short dry season (January to May).



Dance

Panamanians like Latin dances such as salsa, merengue or bachata but they also love their folklore.



San Blas Islands

Is an archipelago comprising approximately 365 islands and cays. They lie off the north coast of the Isthmus of Panama.