

QUITO & THE AMAZON



6 Days FROM \$3,159



Plaza de San Francisco in old town Quito

LAND & CRUISE PROGRAM

(2) Quito • (3) Amazon Cruise



PROGRAM HIGHLIGHTS

- Delve into amazing sights with expert guides on a full-day tour of Ecuador's capital, Quito
- Stand in both the Northern and Southern Hemispheres simultaneously at the Equatorial Line Monument
- Embark on a fascinating 4-day cruise to explore the Amazonian rainforest as you navigate through the Napo and Acurio Rivers in Yasuni National Park
- Discover Laguna Pañacocha, home to the infamous Piranha, water monkey fish, and the white caiman
- See and hear the amazing spectacle of hundreds of colorful parrots, parakeets, and macaws at one of Ecuador's biggest "parrot clay licks"
- Enjoy an interpersonal exchange at the Quechua Cultural Center with members of the local community and learn about their culture, customs, and daily life

- No. of Overnight Stays

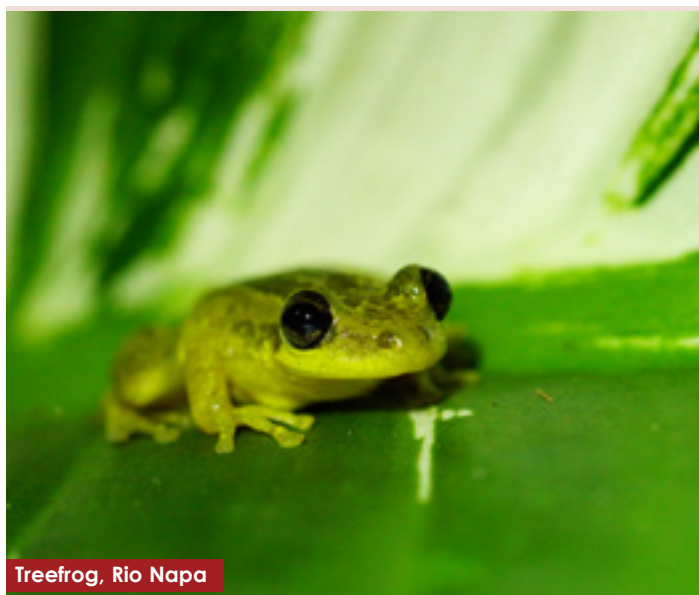
DAY 1 | WED | ARRIVAL IN QUITO Upon arrival you will be met and transferred to your hotel. Enjoy the remainder of the day at leisure to explore this enchanting city at your own pace. Situated at the foot of the volcano Pichincha, Quito is well known for its colonial churches, monasteries, paintings, sculptures and carvings as well as its magnificent blend of Spanish, Flemish and Moorish architecture.

DAY 2 | THU | QUITO After breakfast at your hotel, join in a full-day tour of the city beginning in the historic district, or “Old Town” where you will see the Archbishop’s Palace, the Cathedral, and the Monument dedicated to the heroes of 1809 who fought for independence from Spain. On the way to San Francisco Square, visit the Jesuit church of La Compañía, before heading to the Equatorial Line Monument called the “Middle of the World” where you can stand in both the Northern and Southern Hemispheres simultaneously. (B)

DAY 3 | FRI | QUITO | COCA This morning, after a delicious breakfast, you will be transferred to the airport for a short 30-minute flight to Coca. Upon arrival in Coca you will be escorted to the Rio Napo to embark on a motorized waterborne vessel for an hour and a half sail down river. Enjoy the rainforest landscapes along the Napo riverbanks as you glide along. Later, board the MANATEE Amazon Explorer Vessel for your fascinating 3-day cruise to explore the unique and remote areas of the rainforest as you navigate through the Napo and Aquarico rivers in Yasuni National Park. (B,D)

DAY 4 | SAT | AMAZON REGION Have breakfast onboard and then head out to visit the Panayacu River delta’s flooded forest. See Laguna Panacocha, meaning piranha lake in Quechua, that is home to the infamous Piranha, water monkey fish, and the white caiman. Try to spot these and other inhabitants like pink river dolphins or squirrel monkeys as you take a canoe ride along the river. For lunch, enjoy a delicious barbeque at a nearby campsite. This afternoon, venture along one of the trails and explore the reserve’s fascinating flora and fauna. (B,L,D)

DAY 5 | SUN | AMAZON REGION This morning, visit a “parrot clay lick” and enjoy one of the most exciting and colorful spectacles in the Amazon as hundreds of tropical birds feed on the clay. Along the banks of Yasuni National Park, you will find one of the biggest parrot clay licks, a natural clay formation caused by erosion where parrots, parakeets, and macaws go daily to lick the clay that is said to help in their digestion. The impressive spectacle showcases the colorful diversity of the birds as well as an incredible array of sounds. Afterwards, visit the Quechua Cultural Center where members of the



Treefrog, Rio Napo



Amazon River Sunrise

local community will share firsthand, information about their culture, customs, and daily life. Prior to sunset go to the observation tower that offers a breathtaking 360-degree view of the Amazon basin. (B,L,D)

DAY 6 | MON | COCA | QUITO TO USA (OR EXTEND YOUR STAY) After breakfast, you will take a 60-minute canoe ride back to Coca harbor. From there, transfer to the airport for your flight back to Quito for your connecting flight back home. (B)

(B) Breakfast - (L) Lunch - (D) Dinner

INCLUDED FEATURES

- Hotel accommodations for 2 nights
- 3 nights cruise aboard the Manatee Amazon Explorer
- Daily buffet breakfast and all meals included on your cruise
- All transfers from/to airports, hotels and piers
- City tour of Quito with Equatorial Line Monument
- All daily excursions as outlined during your cruise
- Document holder and luggage tags
- Hotel taxes and service charges

PREFERRED HOTELS (or similar)

City	Nts.	Travel in Style
Quito	2	Hotel Patio Andaluz
Cruise	3	Manatee Amazon Explorer

STARTING FROM PRICES VALID THRU APRIL 2021

Wednesday Arrivals

Travel in Style	Double	Single
	\$3,159	\$4,669

All rates are per person, based on single or double occupancy. Extra nights and triple occupancy available upon request. Rates are not valid during certain holidays and blackout periods. Please contact us for additional cruise and hotel options & private transfers and tours. Round trip flight Quito/Coca/Quito (must be issued by Central Holidays, approximately USD \$260) and Community entrance fees in the Amazon region (\$70) are not included.

Note: Itineraries are subject to change considering flight schedule changes, weather conditions and National Park Regulations.